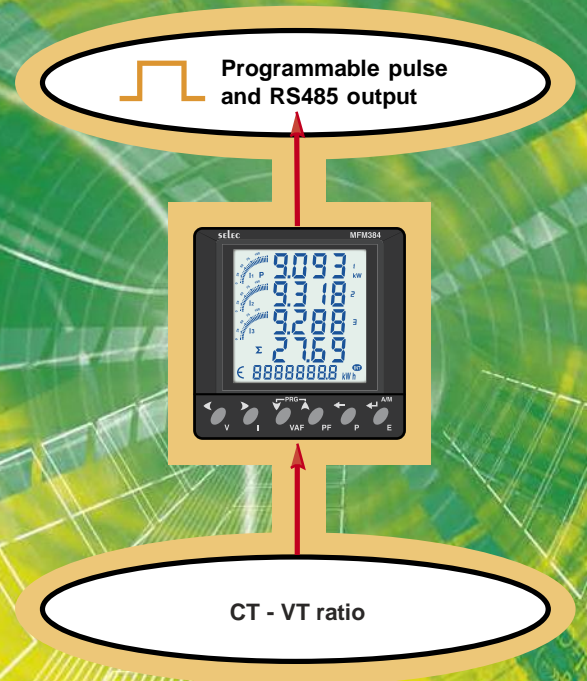


PANEL MOUNTED MULTIFUNCTION METER WITH LCD DISPLAY

TYPE MFM384



Features:

- High definition backlit display
- Bargraph for current indication on every page
- User programmable CT primary, CT secondary, PT primary and PT secondary
- User programmable network selection
- Automatic or manual display scrolling
- Password protected energy reset
- Built-in pulse and RS485 communication (MODBUS Protocol)
- Conforms to EN62053-21
- Class 1
- Only 50mm in depth

Suitable for the following...

- 3 Phase 4 Wire Network.
- 3 Phase 3 Wire Network.
- 2 Phase 3 Wire Network
- Single Phase 2 Wire Network
- 5A and 1A Input
- 5A to 10,000A programmable primary CT ratio.



MFM384

AC THREE PHASE, FOUR WIRE PANEL MOUNTED
MULTIFUNCTION METER WITH LCD DISPLAY

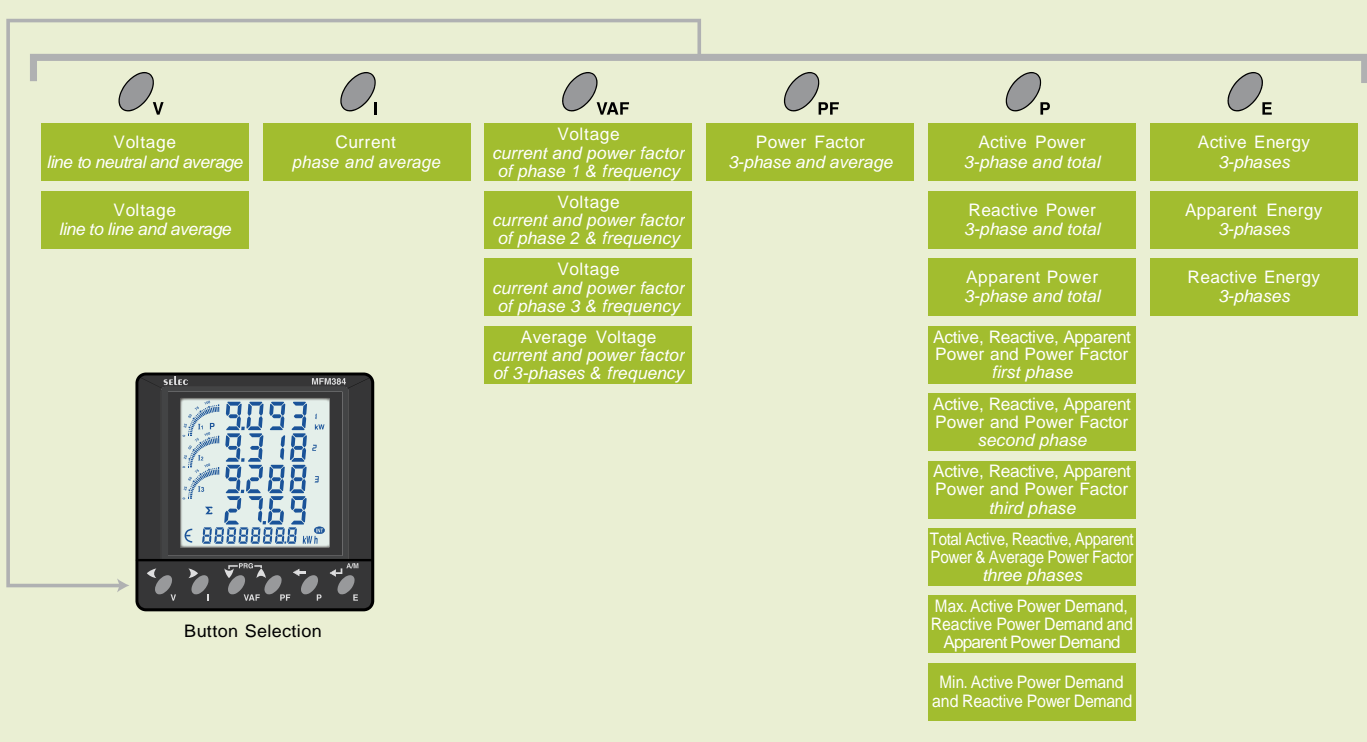
Panel Mounted Multifunction Meter with LCD Display

MFM384

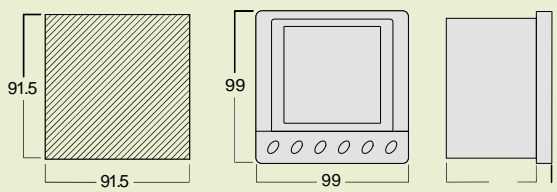


- 96x96mm Flush mounting
- Single phase or 3 phase (3 or 4 wire) network balanced or unbalanced load
- Built in energy pulsed output and RS485 (modbus)
- Backlit LCD display with bargraph current indication on every page
- Automatic or manual scrolling display
- -/1A or -/5A current transformer operated.
- Active energy class 1 (EN62053-21)
- Reactive energy class 2 (EN62053-23)
- Measured voltage 11 to 300V AC(L-N) & 19 to 519V AC (L-L)
- Auxiliary supply 75 to 270VAC
- Programmable CT ratio 1 to 10,000A
- Frequency 50/60Hz
- Wide range of measured parameters (see table below)

Function Diagram



Dimensions Diagram (mm)



How to Order / Model Reference

eg	MFM384C23
Model	mmmmmmmmmm
With built-in Pulse and RS485 Modbus RTU output	MFM384C23